



A TOOL FOR UTILITIES TO HELP DEVELOP A 'KICK @\$\$' WORKFORCE

Energy Education

Coming Soon to a Computer Screen Near You!

Online Energy Management Degree Program

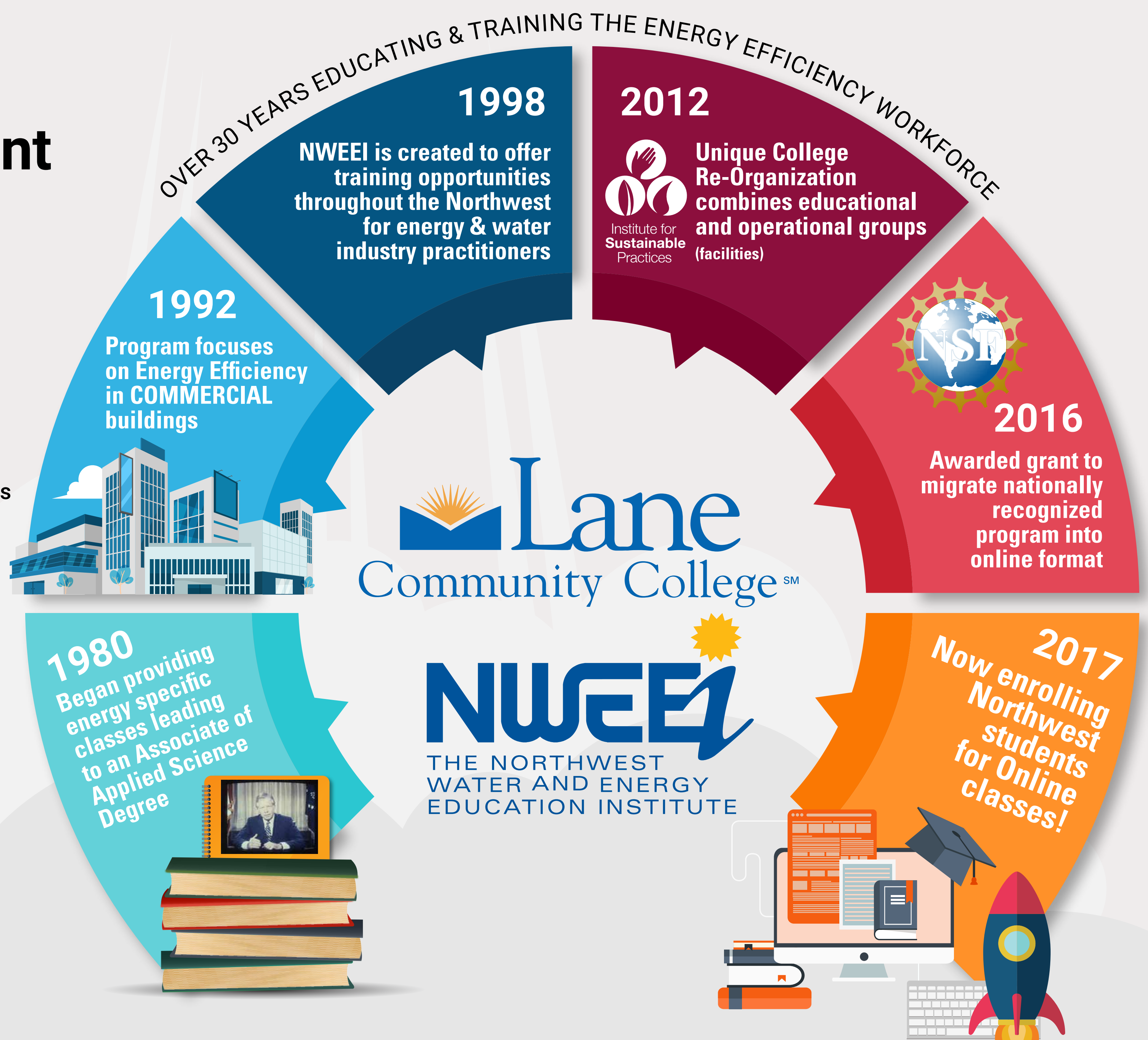
- » 2-Year Associates of Applied Science Degree
- » Students learn how to:
 - » Evaluate energy use patterns
 - » Recommend energy efficiency techniques
 - » Integrate alternative energy sources
 - » Perform systems analysis to solve problems

Hands-on Required

- » Labs completed through local Fieldwork Mentors.
 - » Connection based on student location
 - » Meet in-person to participate in labs
 - » Gain valuable job experiences
 - » Beginnings of a professional network

Fieldwork Mentors

- » Individuals who are able to demonstrate job tasks related to commercial energy efficiency.



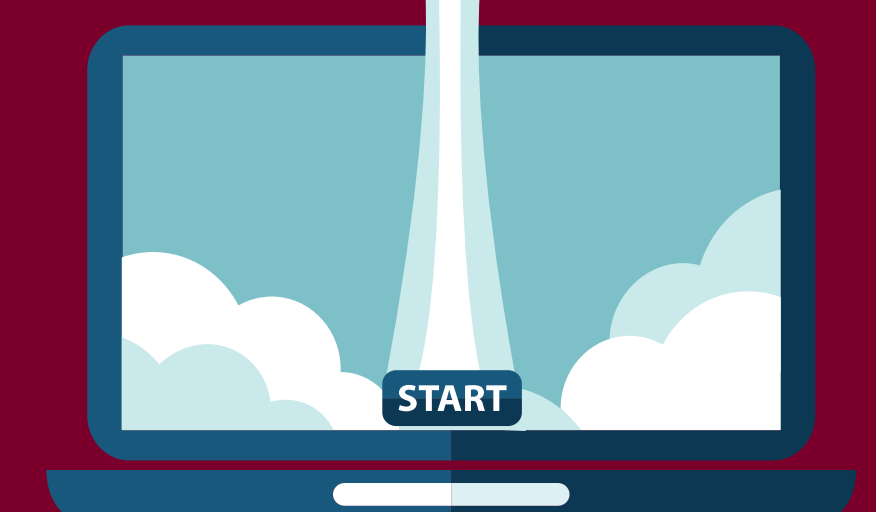
Core Classes Include

Introduction to Energy Management
 Blueprint Reading
 Sustainability in The Built Environment
 Residential/Light Commercial Energy Analysis*
 Alternative Energy Technologies
 Air Conditioning System Analysis*
 Energy Efficiency Methods

Lighting Fundamentals*
 Commercial Air Conditioning System Analysis*
 Fostering Sustainable Practices
 Commercial Energy Use Analysis*
 Energy Control Strategies*
 Energy Accounting
 Energy Software & Applications

Student Info & Application
lanecc.edu/nweei

Mentor Info
nweei.org/fieldworkmentor



How can you get the most out of this tool?

See reverse

* Denotes classes that potentially have field work requirement

How Can Northwest Utilities Use This Tool?

Sign up to be a **Fieldwork Mentor**

Simply provide your Name/Email address and we'll contact you with additional information if a student in your area signs up for classes.

Help us **spread the word**

- Hang a poster on your utilities bulletin board.
- Bring brochures to a student job fair.
- Mention the program in your company newsletter.
- Host an information session for prospective students.
- Collaborate with us to co-market services.
- Like us and our posts on Facebook!

* We will provide you with marketing materials!

Frequently Asked Questions

Q: About how much time will I need to invest?

A: About 1-2 days/term.

- Not all courses require fieldwork
- Depends on the course/term
- Labs are a mix of observational, data collection and hands-on skill building

Q: Is this a long-term commitment like an internship?

A: Nope.

- Project based
- Conducted over 1-2 days
- Limited in scope

* While the degree also requires an internship, it is not assumed that you are interested or able to provide one.

Q: Do I have to evaluate the student's lab work?

A: Not really.

- Submit 4-5 pt. electronic checklist
- Note attendance/involvement

* Online Instructor uses checklist and student submission to evaluate lab work.

Q: Who's liable if a student gets hurt or breaks stuff?

A: We are*.

- Students who are enrolled are **extensively covered** by the College's liability policy.

* Barring legal scenarios where the College itself can not be held liable (i.e. gross negligence). Proof of coverage will be provided upon request.